

When You Need To Be Able To Turn On A Dime

Strategies for Building a Flexible Library

Susan Starr, Ph.D., Director, University of California, San Diego, Biomedical Library
Barbara Slater, Capital Projects Coordinator, University of California, San Diego, Biomedical Library

Make the Library a Beacon

- Provide access from North and South
- Use a breezeway to increase traffic
- Create potential 24 hour access zone
- Emphasize the signature roofline



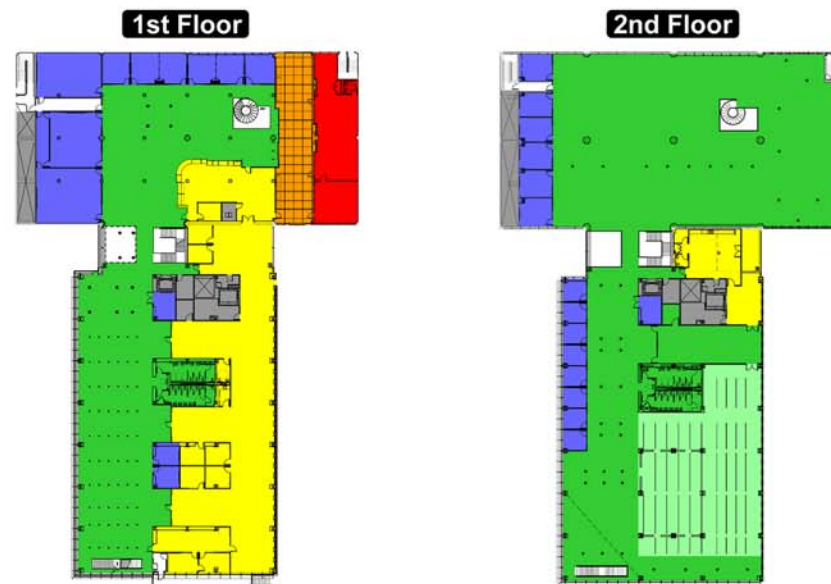
Create Adaptable Learning Spaces

- Design abundant open space
- Make room sizes modular
- Install lights and doors to allow for change



Design for Redesign

- Construct floors for compact shelving expansion
- Put utilities, elevator, and telecom in a central core
- Install high ceilings throughout
- Keep HVAC vents off the floor



Provide Ubiquitous Infrastructure

- Install data and electric everywhere
- Use wireless friendly materials
- Trench floor for future expansion
- Put in extra electrical circuits



Facilitate Reconfiguration

- Design a modular service desk
- Use low shelving for smaller collections
- Minimize built-in units
- Purchase standardized furniture
- Install generic signs



Project Specifications

Current Library	Finished Project
• Built 1969	• Expected 2006
• 27,764 ASF	• 51,094 ASF
• 237 seats, 210,000 volumes	• 900 seats, 210,000 volumes
Architects	
• Hardy Holzman Pfeiffer Associates LLP	
• Cost: \$17.8 million	